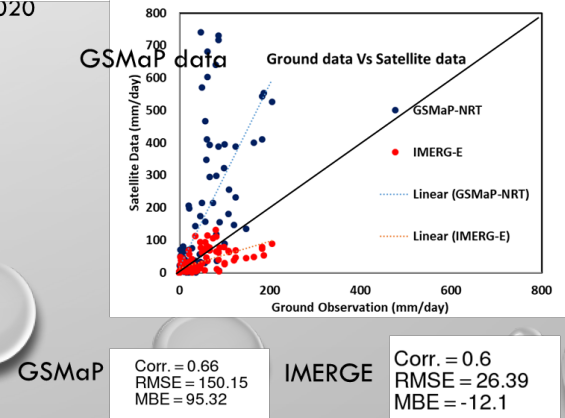
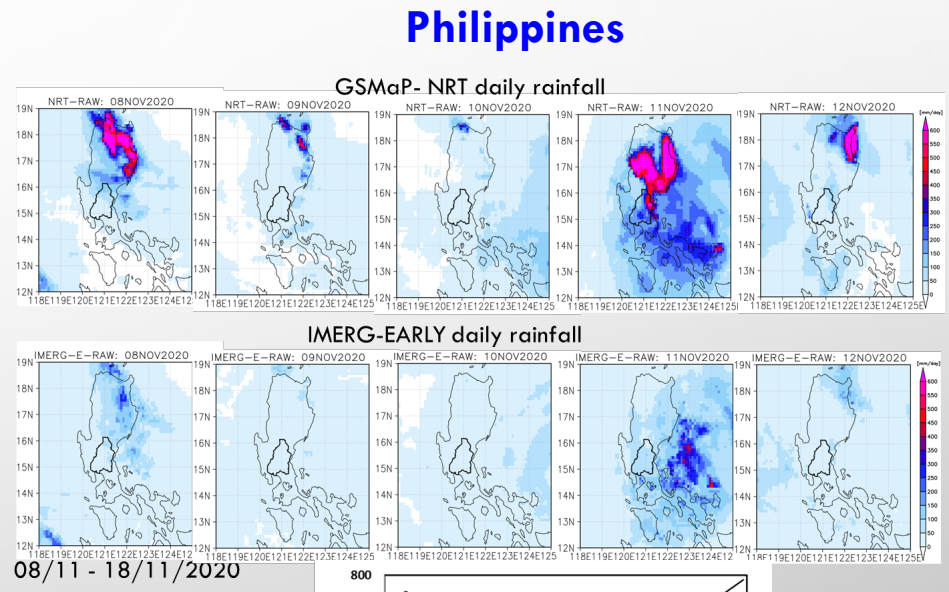
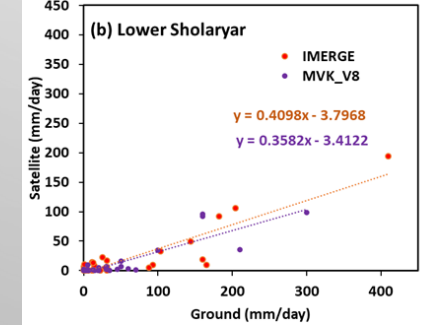
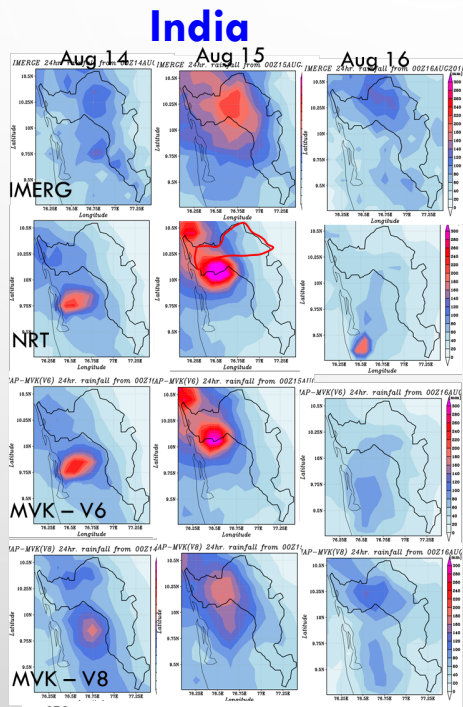
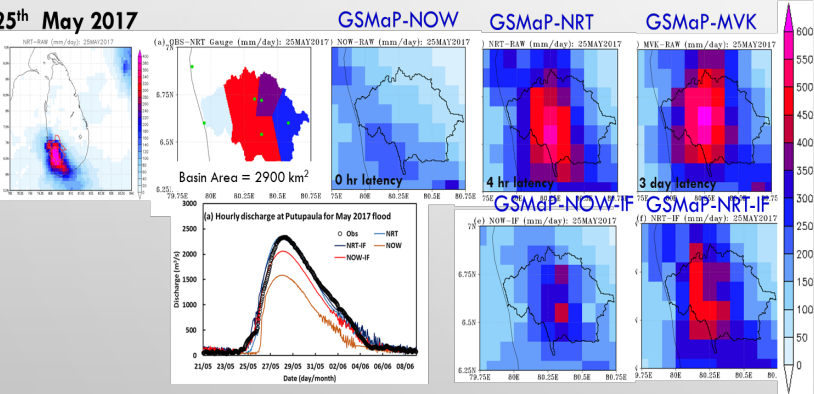


Discussion

- Reliable and timely precipitation information is crucial for DRR activities and risk informed development
- Satellite precipitation estimation is very valuable and have the advantage of high spatial resolution and global coverage, but these estimates have bias in quantity → indirect measurements
- Remarkable progress was made in improving the quality and quantity of satellite estimates – Bias correction needs to be customized using real-time or near-real time ground data

SATELLITE RAINFALL PRODUCTS:



Capacity Building & Training

Strengthen capacity & Enabling trust-based relationship

INTERNATIONAL
FLOOD
INITIATIVE

MISSION STATEMENT:

The International Flood Initiative (IFI) promotes an integrated approach to flood management to take advantage of floods and use of flood plains while reducing the social, environmental and economic risks.

OVERALL OBJECTIVE:

To build the capacity necessary to understand and better respond to flood hazards, vulnerabilities and benefits.

In Close Collaboration with:



Capacity Building Training Workshop on the Assessment of Flood Disasters under changing climate in Sri Lanka



From 21st to 22nd Of August 2019
Irrigation Training Institute - Galgamuwa

On-Site Training & Capacity building

INTERNATIONAL
FLOOD
INITIATIVE

IFI Strategic Structure

Integrated Water Resources Management (IWRM)

Sendai
Framework

SDGs

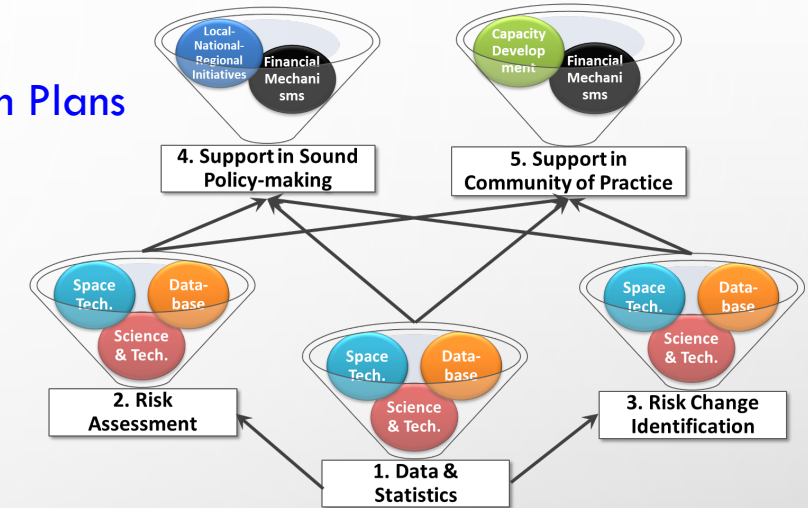
Paris
Agreement

Integrated Flood Management (IFM)

Minimizing
social, environmental
and economic risks


Maximizing
net benefits from the
use of flood plains

IFI Implementation Plans



- ✓ Lectures & Hands-on training
 - Hydrological modeling & application
 - Satellite remote sensing & data processing

Hydrological Processes, Modeling, & Introduction to WEB-RRR Modeling



Mohamed Rasmy
Senior Researcher/Associate Professor
PWRI/ICHARM

Hands-on training on hydrological modelling and flood mapping



Mohamed Rasmy
Senior Researcher/Associate Professor
PWRI/ICHARM

E-Learning & Capacity building