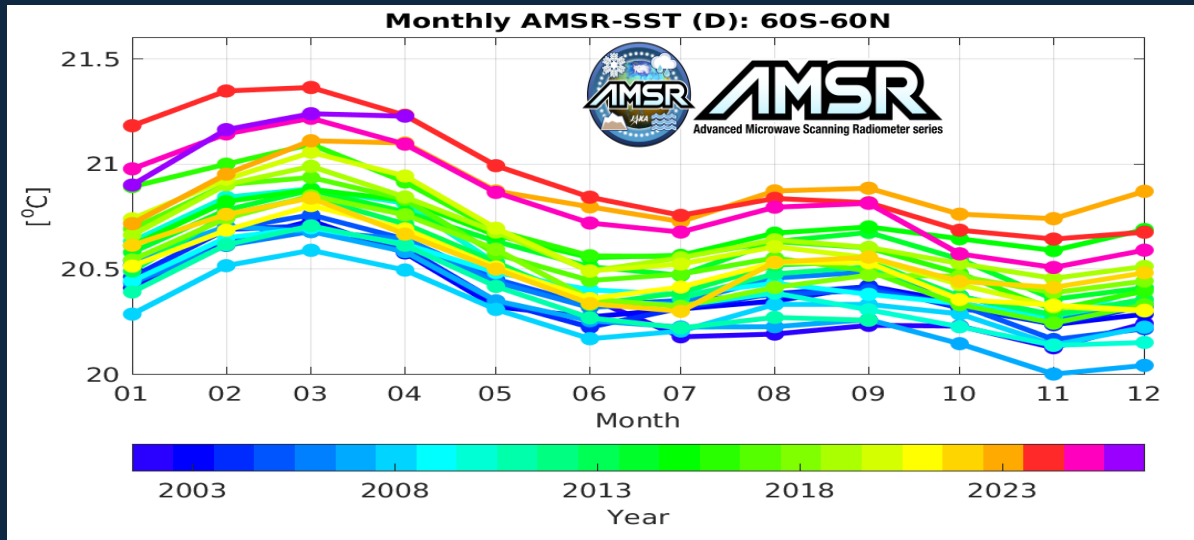


Climate Change observed from space

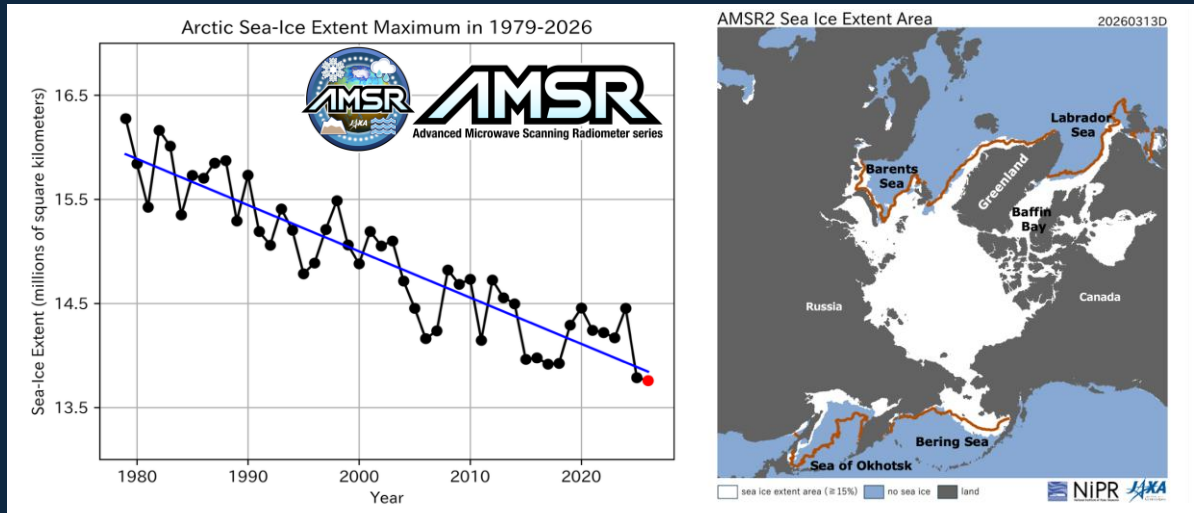
— growing importance of understanding Earth-changing processes

Increasing in sea surface temperature

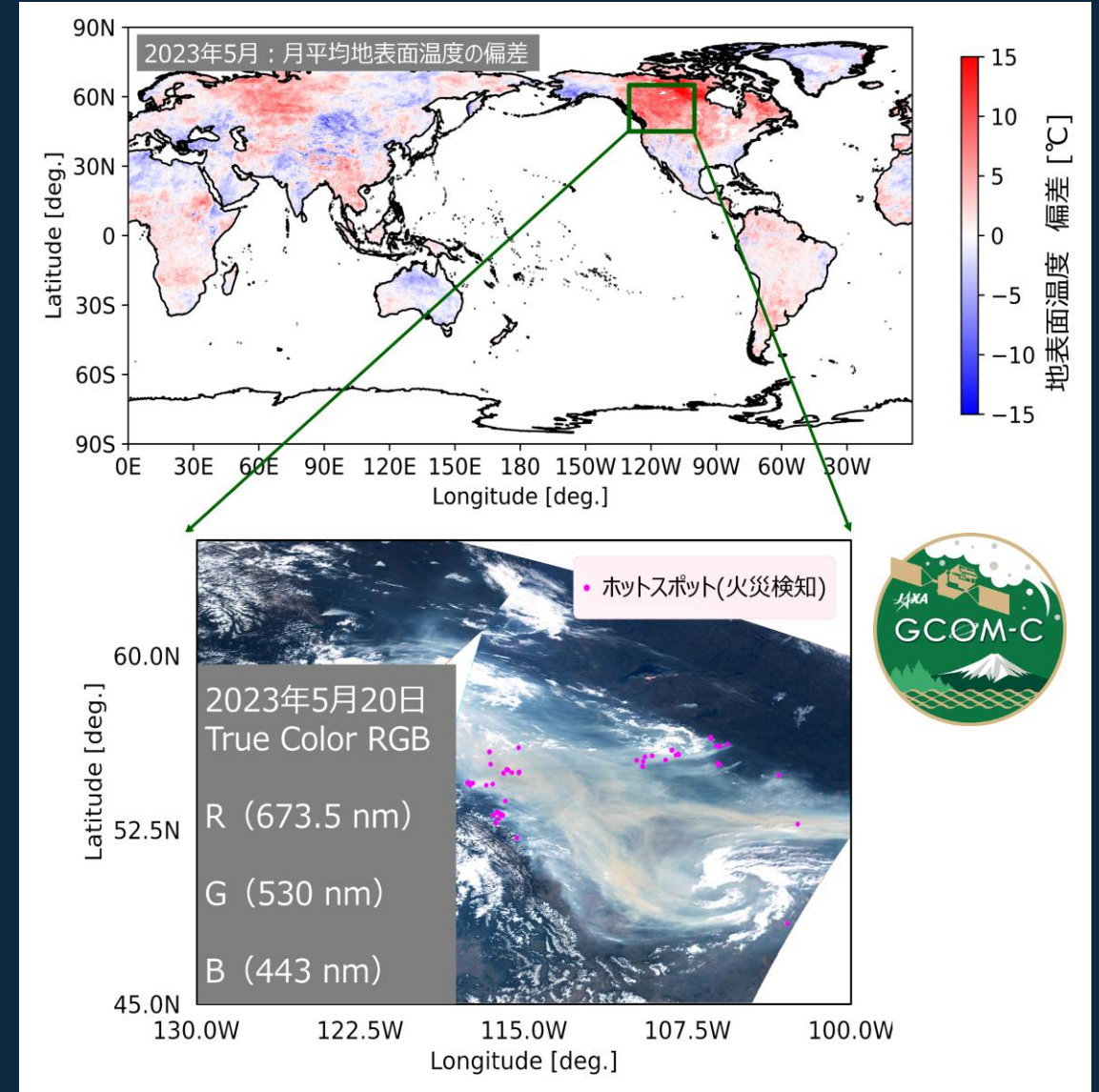


Seasonal variation of monthly mean global SST (60°S-60°N)

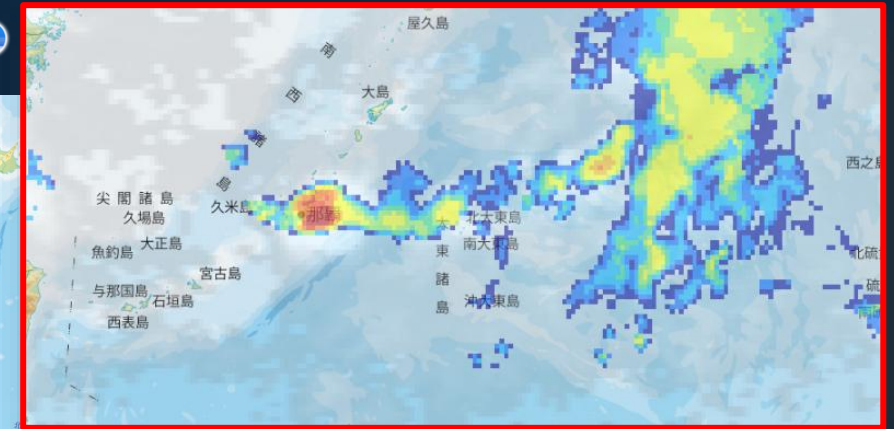
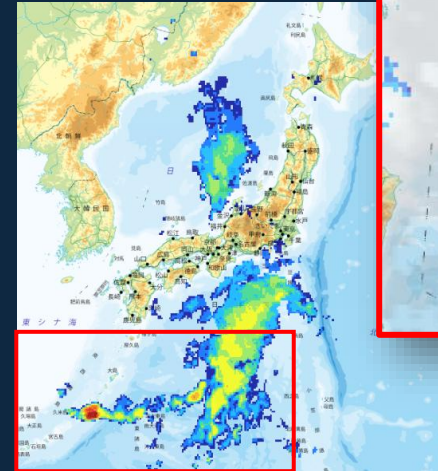
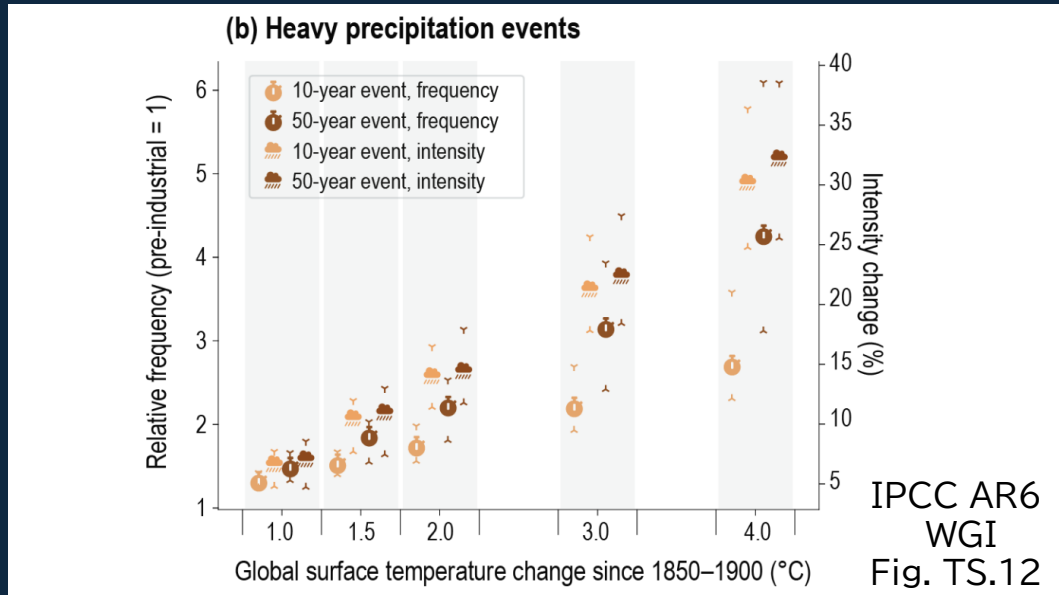
Decline in the Arctic winter sea-ice extent



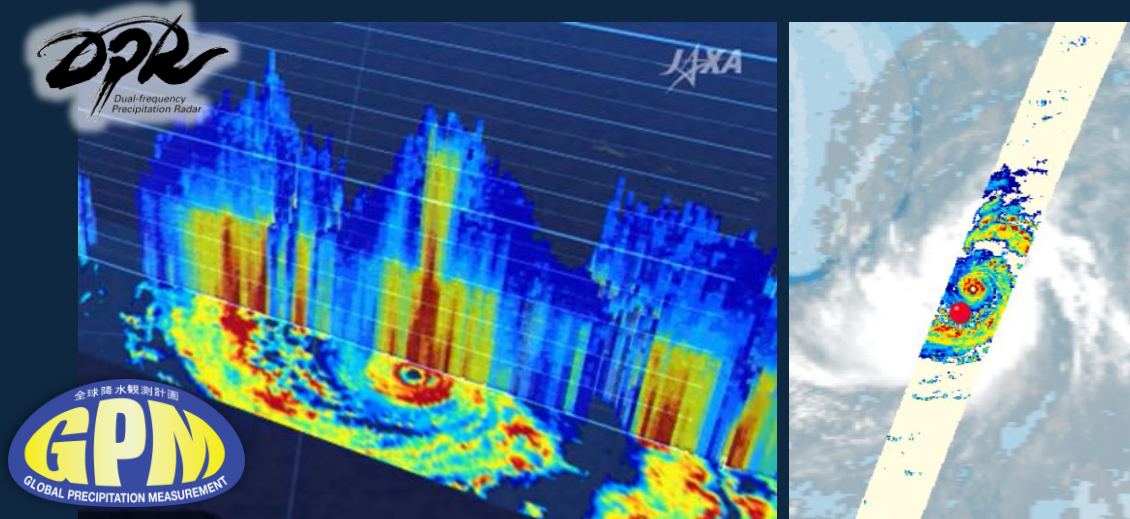
Increasing in land surface temperature



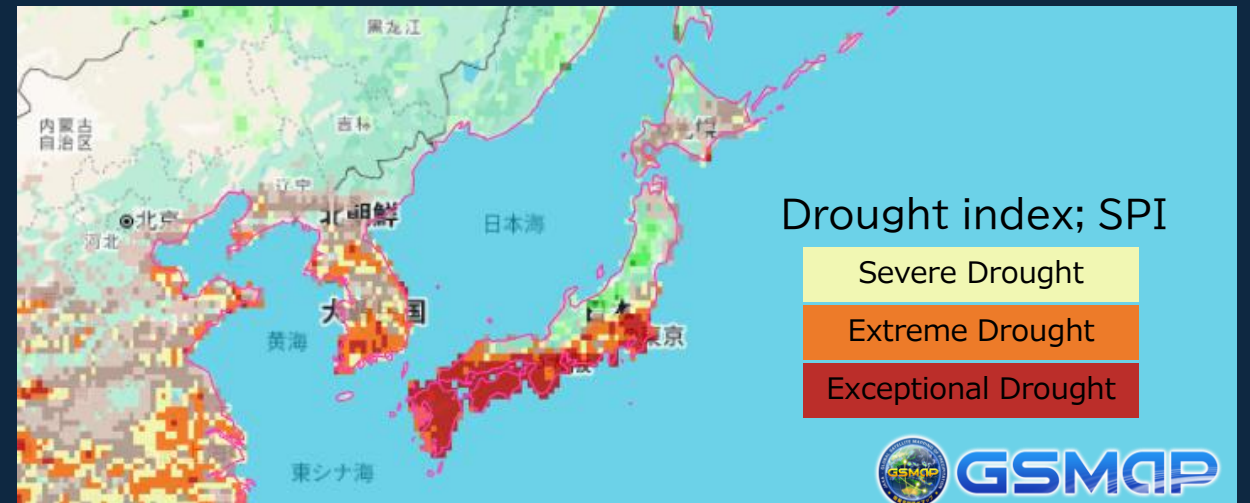
Increasing in extreme events —heavy rainfall and droughts causing floods, water shortage



Linear rainband or 線状降水帯
in Okinawa region, May 23, 2026



Super Typhoon Sinlaku struck Saipan, observed on April 12, 2026



Water shortage in Japan, January 2025

