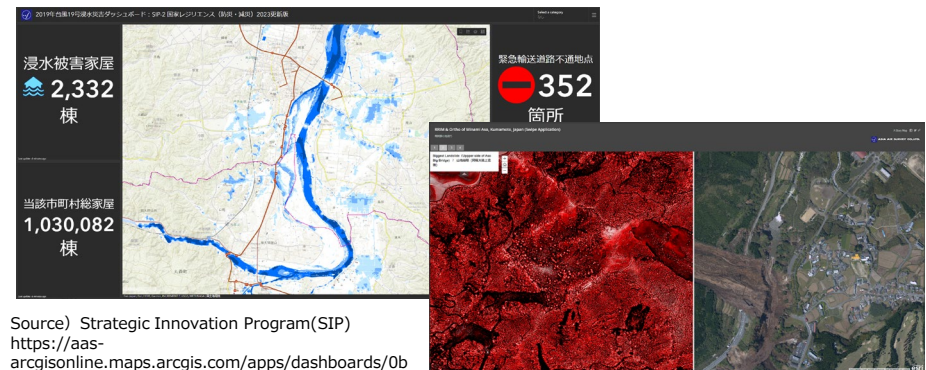


Disaster Monitoring Service

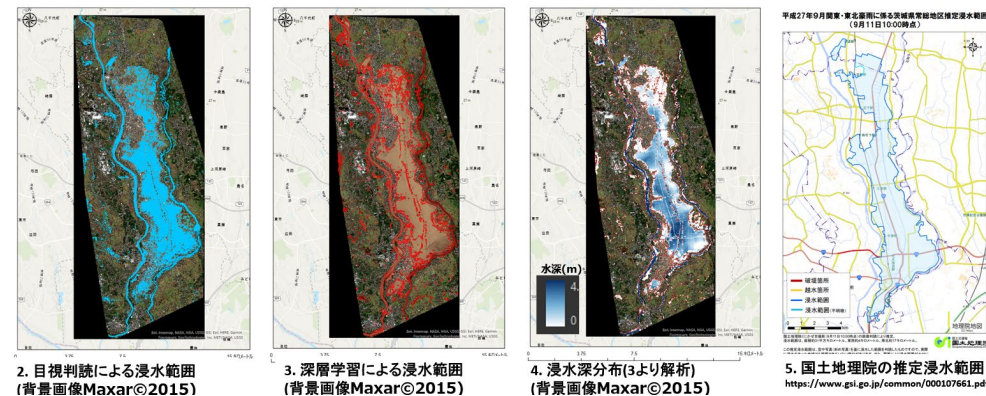
- This service allows users to investigate the locations of landslides, the extent of flooding, and the distribution of flood depths online.
- Users can check the number of houses, emergency transportation routes, and important infrastructure located within the flooded area online.
- Topographic maps, disaster hazard maps, and aerial photographs are also available.

Company name	Asia Air Survey Co., Ltd.
Service Overview	<p>As an urgent report during large-scale disasters, we provide information on the disaster situation using satellite data. The satellite data is used to analyze the locations of landslides, the extent of flooded areas, and the distribution of flood depths.</p> <p>Detailed topographic information based on Basic Map Information (https://www.gsi.go.jp/kiban/) and Red Relief Image Maps (https://www.rrim.jp/), as well as overlaid hazard maps (https://disportal.gsi.go.jp/maps/), can also be referenced.</p> <p>Our company can also conduct oblique aerial photography, enabling a comprehensive understanding of the disaster situation through abundant information.</p>
User	Disaster Management Officer
Satellite	Optical and SAR
URL	www.ajiko.co.jp/en/



Source) Strategic Innovation Program(SIP)
<https://aas-arcgisonline.maps.arcgis.com/apps/dashboards/0b1a9e0f80c34c81b42055631c6c68d4>

Source) Red Relief Image Map and Orthophoto of Minami-Aso, Kumamoto Prefecture
<https://aas-arcgisonline.maps.arcgis.com/home/item.html?id=3fd34d0ac6fb4fe0aebeafaa7de31d3>



Source) Strategic Innovation Program(SIP)