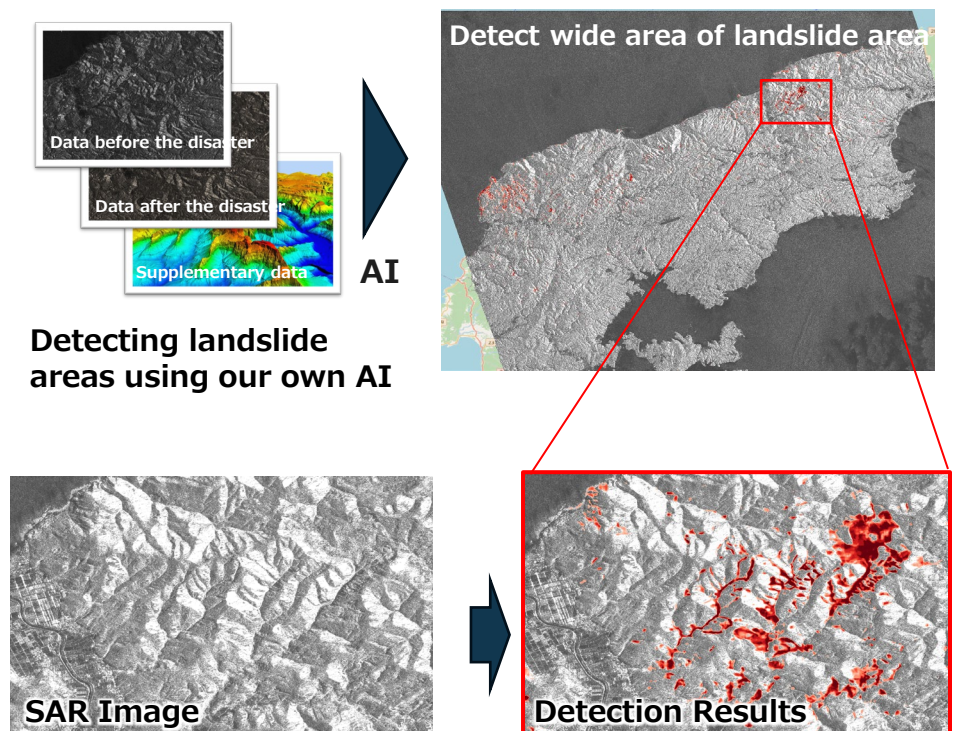


Detection of Landslide Locations Using Satellite Data

- AI for automatic landslide areas detecting using SAR satellite data
- SAR satellites can be used for wide-area observation under severe weather conditions and night time, making them effective for assessing damage from disasters.
- Prompt and extensive damage assessment after a disaster occurs enables the selection of transportation routes for supplies.

Company name	Space Shift Inc.
Service Overview	Earthquakes and heavy rains that occur in various parts of Japan cause slope failures and landslides, resulting in human disaster and traffic disruption. In order to take appropriate countermeasures, we have developed our own AI algorithm to automatically detect landslide areas. The SAR satellites we use are capable of wide-area observation of the ground surface in all weather conditions, day and night, making them effective in identifying damage in the event of a disaster. It is expected to be used to identify areas of damage after a disaster occurs and to select transportation routes for supplies and human support.
User	Construction consulting firms, Insurance companies, Municipalities, Media
Satellite	ALOS-2/4, Sentinel-1, X-Band small SAR satellite
URL	https://www.spcsft.com/en/



Source) Space Shift Inc.
Expected to be utilized for identifying damage areas, selecting transportation routes for supplies and human support.