

## Japanese Disaster Charter (BRIDGE)

- The Japan Disaster Charter(BRIDGE) is a framework that utilizes satellite resources to gather and use data for understanding the wide-area damage situation during initial disaster response and recovery and reconstruction.
- This year, it is undergoing demonstration to achieve institutionalization and the establishment of its system.

Company name	National Research Institute for Earth Science and Disaster Resilience, Mitsubishi Electric Corporation, Satellite Data Services Co., Ltd. Remote Sensing Technology Center of Japan, Fujitsu Limited
Service Overview	<p>"Utilize a wide variety of satellites through a one-stop service"</p> <ul style="list-style-type: none"> <li>●Conduct emergency observations using a diverse range of satellites, including wide-area, high-resolution, optical, and radar satellites.</li> <li>●Capture images with the most suitable satellites based on the type of disaster, time of occurrence, scale, and weather, and provide analysis results tailored to user needs.</li> <li>●Operate 24 hours a day, 365 days a year.</li> <li>●The Charter Office handles contracts and coordination with different satellite providers for each satellite.</li> </ul>
User	Disaster-related ministries, designated administrative agencies, designated public institutions, local governments, private sector (electric power, railways etc)
Satellite	<ol style="list-style-type: none"> <li>1. ALOS-2/4 (Japan)</li> <li>2. Private small satellites: Synspecive, Institute for QPS, Axelspace (Japan), Capella, Satellogic (USA)</li> <li>3. Private commercial satellites: SPOT, Pleiades (France), CSK/CSG (Italy)</li> </ol>
URL	<a href="https://www8.cao.go.jp/cstp/bridge/keikaku/09_bridge.pdf">https://www8.cao.go.jp/cstp/bridge/keikaku/09_bridge.pdf</a>

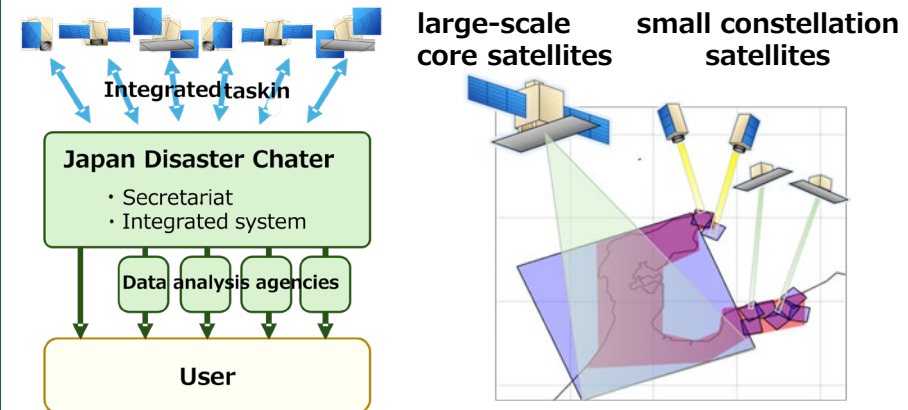


Fig1. Japan Disaster Charter(BRIDGE) Scheme Concept

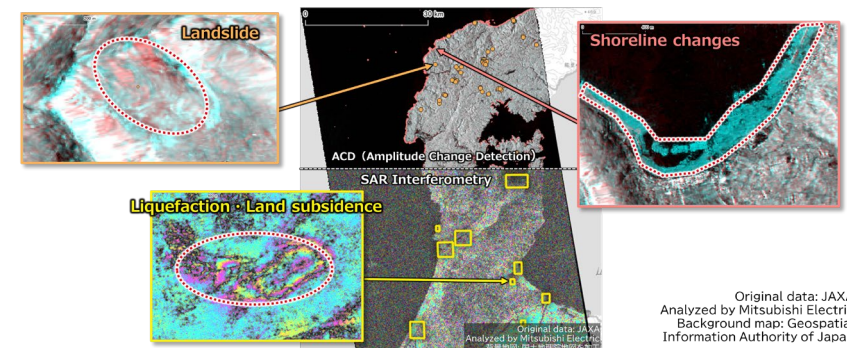


Fig 2. Disaster situation analysis using satellite data