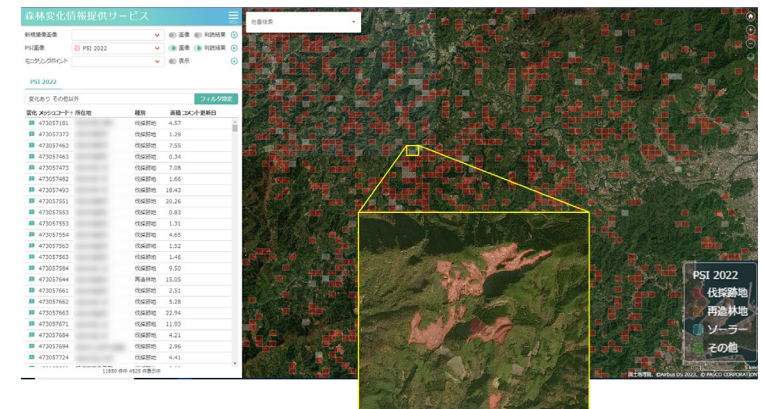


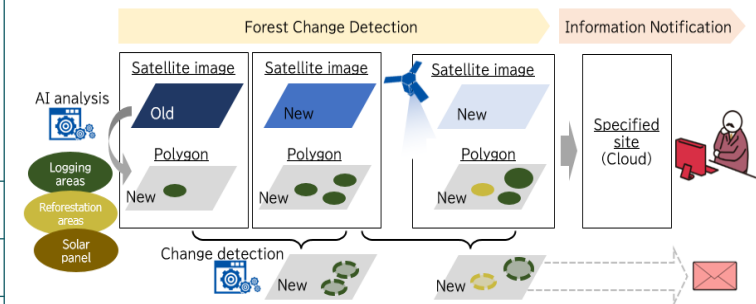
Providing “MiteMiru Forest” service by utilizing the Satellite × AI

- Change detection of logging and reforestation areas based on satellite images from two different time periods, and notifying the occurred changes.
- Implementation of cadastral maps with registered information and detected ground mounted solar panels.
- Observing the results through a general web browser (GIS software is not required).

Company Name	PASCO CORPORATION
Service Overview	<p>Forest resources, planted after World War II, have grown matured and are fully ready for harvest, with harvesting proceeding nationwide. In addition, the revised Forest Act requires local governments to conduct onsite checking of the logging and reforestation, verifying the status, reports and future plans.</p> <p>“MiteMiru Forest”, a Forest Change Detection Information Service, utilizes satellite images and AI interpretation technology to continuously monitor wider logging and reforestation areas, thereby reducing the workload of local government officials. Since its launch, the service has been adopted by 53 municipalities (as of October 2024). The image interpretation uses company's proprietary unique AI/Machine learning technology that won first prize for satellite image recognition in the international competition.</p>
User	Local government officials
Satellites	SPOT6/7
URL	https://www.pasco.co.jp/biz/service/shinrin-henka/



“MiteMiru Forest” website image



Interpretation workflow