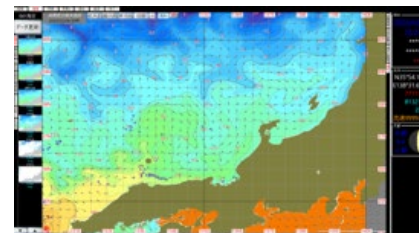


Sea condition information service “Ebisukun”

- Provides a variety of information affecting operations such as sea surface temperature, wind direction, wind speed, and wave height in a centralized manner.
- Provides not only recent sea condition data, but also forecast sea condition information and forecast fishing ground maps.
- Enables offshore fishing vessels to view oceanographic information even in offshore areas where data transmission speeds are limited.

Company name	Japan Fisheries Information Service Center (JAFIC)
Service	The fishing industry has shifted from “fishery relying on experience and know-how” to “fishery with information technology (IT fishing)” in line with technological advances. Currently, many fishermen are using a variety of information along with their past experience and knowledge. However, it is difficult to obtain sufficient information offshore as it is on land due to communication problems. The marine weather and meteorological information service “Ebisukun” provides useful information on water temperature, currents, and weather via the Internet so that it can be used offshore as well. The information obtained can be displayed in Ebisukun in a way that is easy for users to use. Marine weather information is created by JAFIC’s own analysis of data observed by various satellites and actual measurements from cooperating fishing vessels.
User	• Fishing industry worker
Satellite	• GCOM-C (Sensor : SGLI) • GCOM-W (Sensor : AMSR2) • Himawari (Sensor : AHI)
URL	https://www.jafic.or.jp/service/ebisukun/

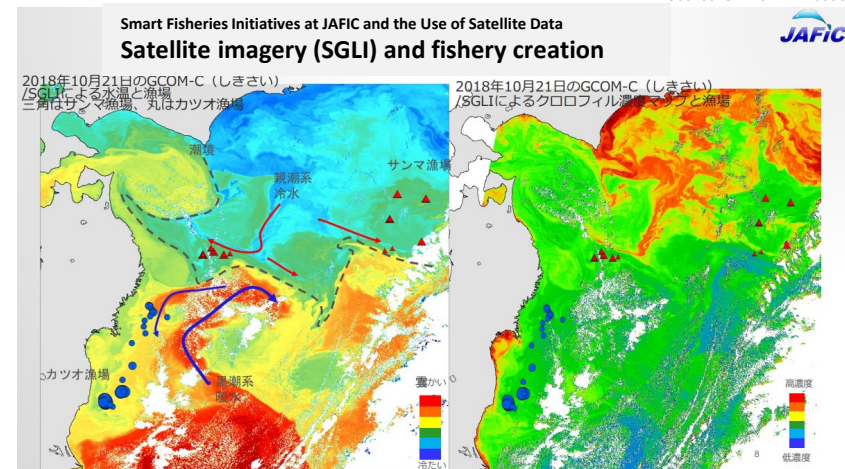
Daily Sea Surface Temperature Chart



Pinpoint wind direction, wind speed and wave height prediction



Source: JAEIC HP “About Ebisukun”



Source: Symposium “Smart Fisheries and Satellite Applications” from the lecture material by Katsuya Saito, 2022